

# SENSOR CAPABILITIES

Security Operations

COMINT + EO/IR



**SCHIEBEL**  
CAMCOPTER® S-100

FACTSHEET

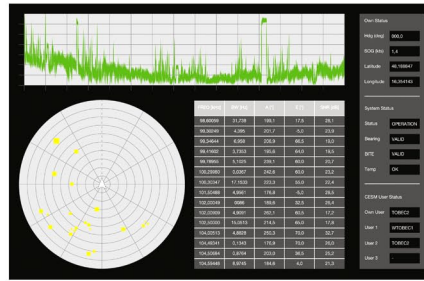
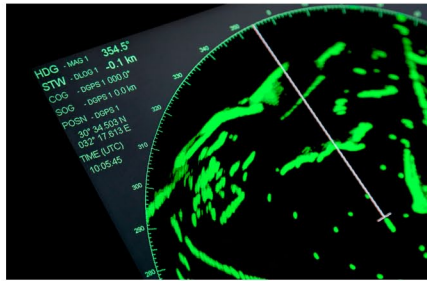
## Security Operations

COMINT + EO/IR

**B**alancing the level of acceptable risk with physical security solutions against cost, and other appropriate countermeasures is one of the most challenging responsibilities security organizations face. Flexibility, agility, responsiveness and the ability to cover wide areas are all critical to timely success. Integrated capabilities that all contribute to effective delivery include:

**Airborne Communications Intelligence (COMINT)** significantly improves the efficiency of monitoring and intelligence missions. It serves as a key component of today's intelligence process with its large footprint providing signal intelligence over large operational areas, supporting wide-area surveillance missions and border protection.

The COMINT payload delivers high probability of intercept signal detection, high-accuracy direction finding and geo-location at a level of performance previously only available from much larger systems.



### Intercept

- Software-defined capability
- Intercept frequency range 30 MHz to 3 GHz
- Instantaneous wideband receiver bandwidth 40 MHz
- Sensitivity 10 dB SNR

### Direction Finding

- Frequency range 30 to 470 MHz
- DF accuracy 5 deg RMS

**Electro-Optical/Infrared (EO/IR)** sensors provide for uninterrupted surveillance of borders, urban areas, activity and events both by day and night. EO/IR gimbals deliver advanced, wide-area situational awareness and intelligence gathering by means of collection, identification, categorization and geo-location of complex emitters.



### Multi-sensor Imaging/Lasing Payload Options

- Currently supports up to 6 different sensors simultaneously
- Superior HD imaging resolution from an EO camera
- Real-time image enhancement for EO day, EO night and IR
- High-accuracy target location
- Fully active 4-axis stabilization